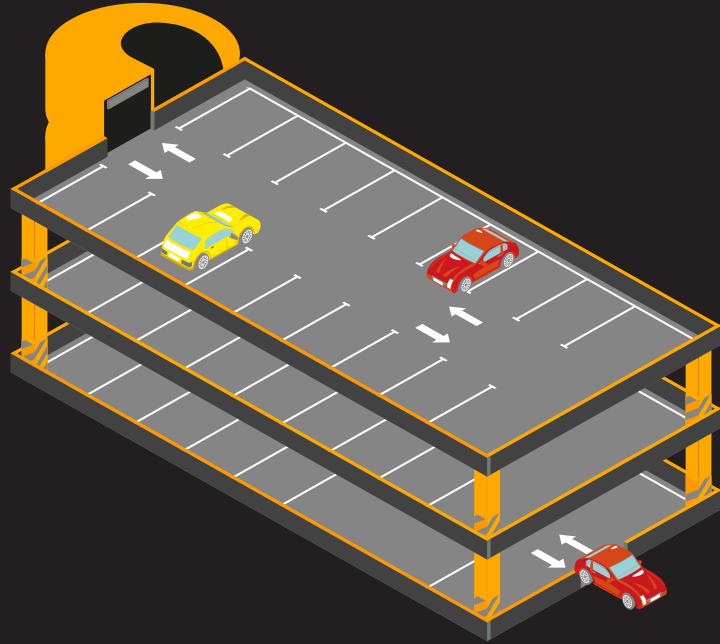




### ***Kelompok 18***

<b>Christopher Timothy Kwee</b>	(23101910029)
<b>Dennis Jonathan</b>	(23101910027)
<b>Gilbert Aurelio Sachio</b>	(23101910047)
<b>I Wayan Adi Saputra</b>	(23402010004)
<b>Justin Jedidiah Sunarko</b>	(23101910024)



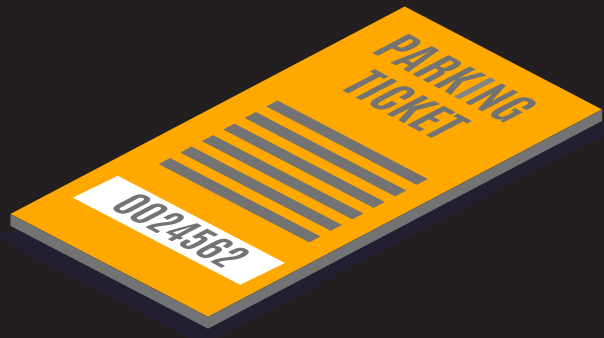
## *Background.*

---

Have you ever find it **difficult to find parking spots** when it's super crowded?

**Driving in circles for a long time** in the parking lot is stressful, isn't it?





# *Benefits.*

Time **efficient**

User **convenience**

Environmentally **friendly**

**JUST-IN PARK**

Search Parking Location

Justin Park Admin

Tempat Tersedia: **13**

Tempat Terisi: **56**

Lokasi Parkir

Keramaian Tempat Parkir

Version: 1.0.0

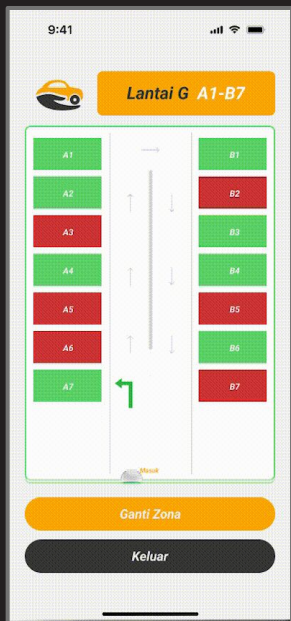
The screenshot displays the admin interface for 'JUST-IN PARK'. On the left is a navigation menu with options: Dashboard, Mobil, Motor, Lokasi, Statistik, and Pengaturan. The main area features a search bar, a user profile for 'Justin Park Admin', and a large grid of 48 camera feeds (8 rows by 6 columns). Each feed shows a car in a parking spot, with a red border and 'not avail' text for occupied spots, or a green border and 'available' text for free spots. Below the grid is a line chart titled 'Keramaian Tempat Parkir' showing parking popularity from 10:20 to 14:40. To the right, there's a 'Tempat Tersedia' (13) and 'Tempat Terisi' (56) summary, a 'Lokasi Parkir' map of Tangerang Selatan, and a version number '1.0.0'.

# Our Product.

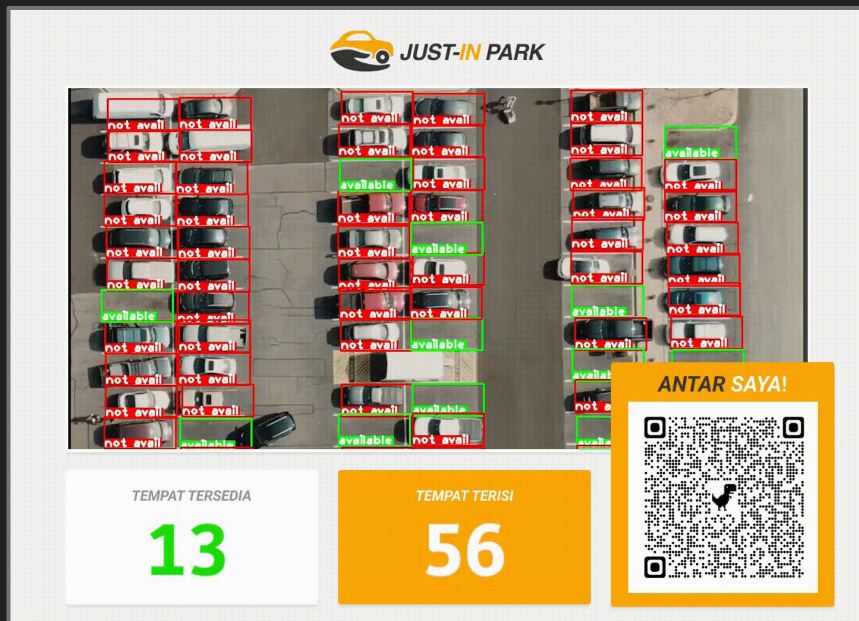
## Integrated Parking System

We provide a whole parking system package integrated with our smart detection and guidance

Admin Side



User Guide



Gate Display

# Our Product.

## Smart Detection & Guidance

We use CCTV to detect empty spots and deliver the information to customers through our web-app

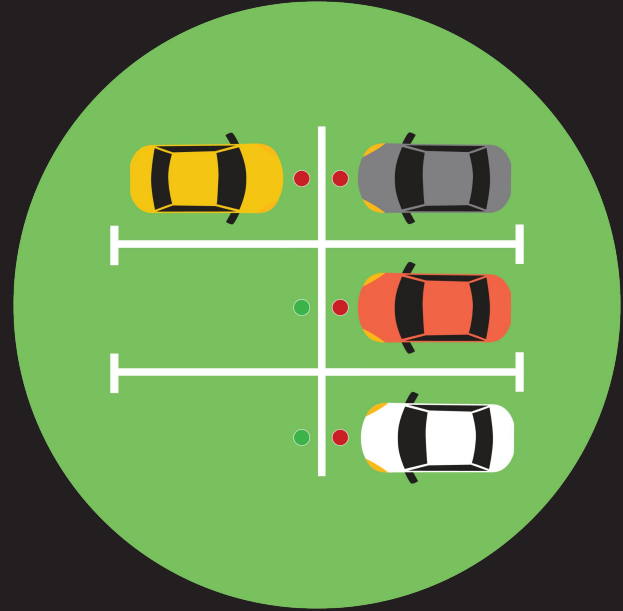
# Our *Business Model.*

## B2B

Implementing a profit sharing system  
Just-In Park **35% - 65%** Partner

## What we provide

Provide adequate tools and manage the  
parking system for partners





# *Market Size.*

There are **100** new buildings per year in Indonesia per year

We try to take **2%** of the market size for initial business growth.





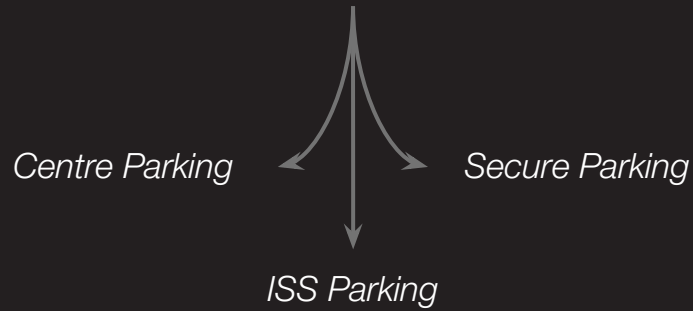
## ***Go-to-Market Strategy.***

Contact for companies that have new buildings or don't have a parking system by email, messaging apps, or in-person

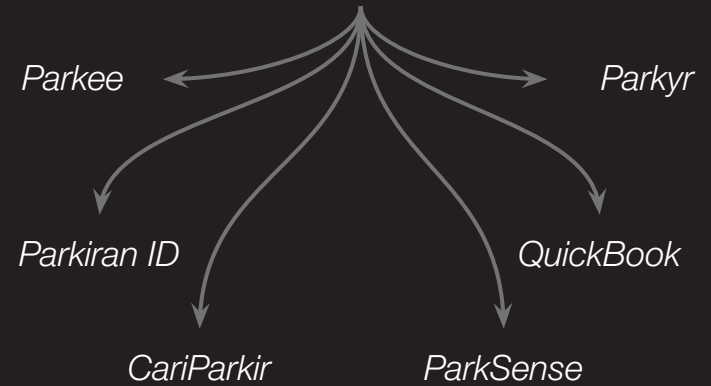
# Our Competitors.

---

## Conventional Parking Providers



## Book-to-Park Providers



# Meet Our *Team.*



**Christopher  
Timothy K.**

Chief  
Executive  
Officer



**Dennis  
Jonathan**

Chief Marketing  
Officer



**Gilbert  
Aurelio S.**

Chief  
Financial  
Officer



**I Wayan  
Adi Saputra**

Chief  
Technology  
Officer



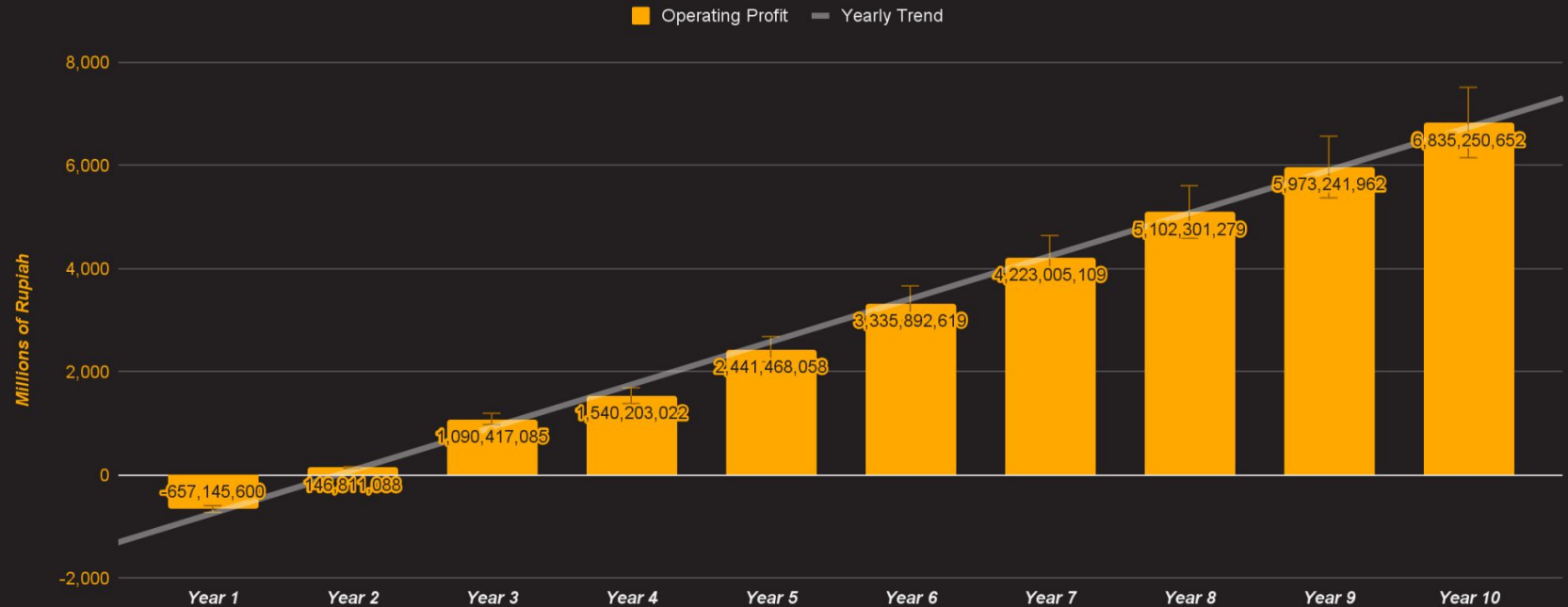
**Justin  
Jedidah S.**

Chief Operating  
Officer

# Financial Projections.

## Year-to-Year Projected Profit

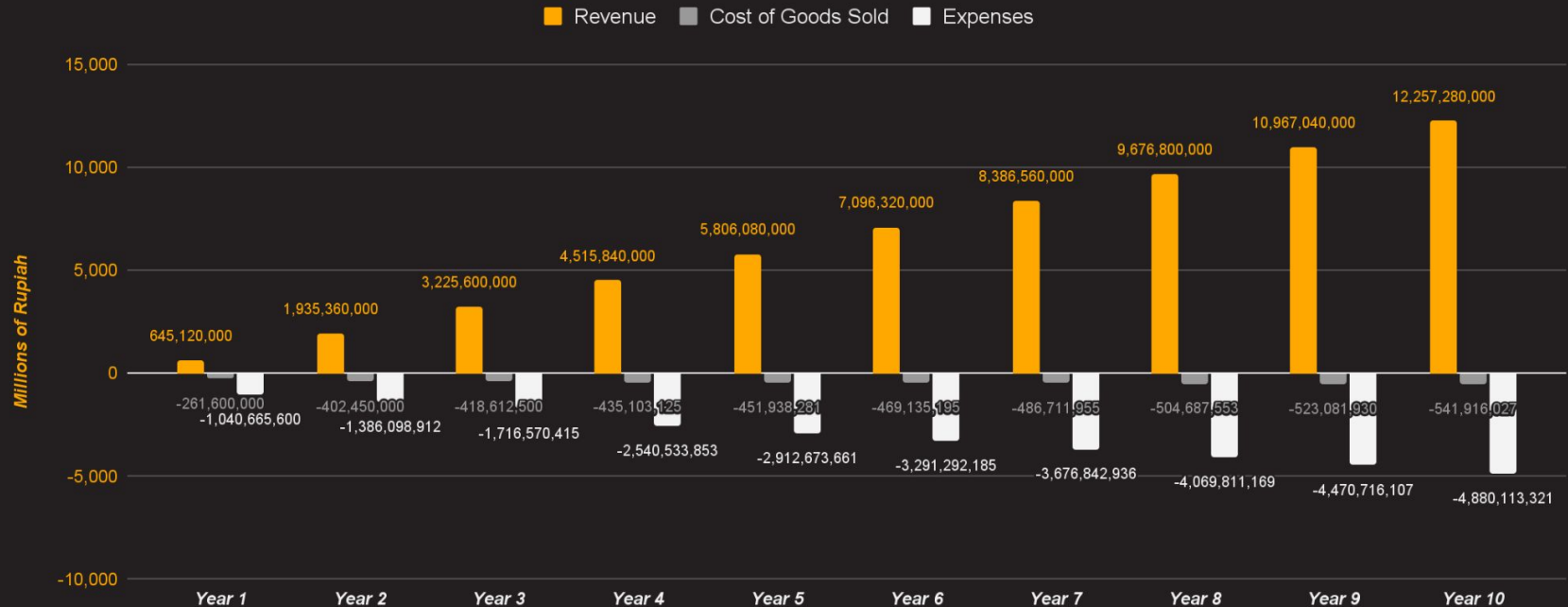
Assumptions for the first 10 operating years



# Financial Projections.

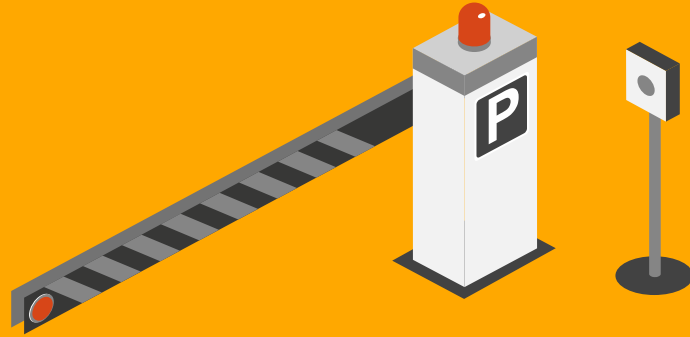
## Profit & Loss Projection

Assumptions for the first 10 operating years



# *Our Goals.*

- **Growth in active partners** of at least 2 every year
- **Payback period** in 3 years
- **Operating profit >10%** in 3 years
- **Expansion** to other cities
- **Headcount growth** to 20 people



*Thank You.*

The video presentation is available in the link below

**[bit.ly/Businov-Kel18](https://bit.ly/Businov-Kel18)**